

History of Chiyoda

History

1909 January 2: Founder Tsunekichi Asabuki opens a store in present-day Ginza, Chuo-ku and becomes the president. Names the business Chiyodagumi. August: Established the Osaka Branch (current Kansai Branch).

1912 Officially concluded a dealership agreement with current Toshiba Corporation. Launched sales of the first domestically produced motor.

1918 Became a joint-stock company, and held an organizational meeting on July 30. (Stated capital: 600,000 yen)

1920 Opened an office in Nagoya and began doing business with Ebara Corporation.

1924 Began doing business with Tsubakimoto Chain Co.

1938 Spun off the Ginza store to establish Manjyu Corporation.

1967 Established current Chiyoda Kiden Co.

1968 Expanded business relationships with current IHI Corporation.

1984 Established an office in Mexico.

2006 Strengthened ties with affiliated companies.

2009 Celebrated 100th anniversary.

2011 Established Chiyoda Trading(Shanghai)Ltd.

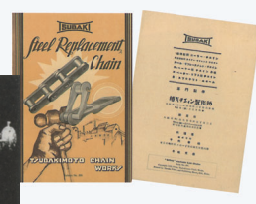
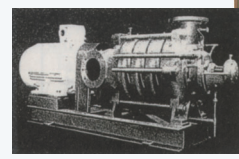
2016 Established Chiyoda Korea Co.,Ltd.
Established Chiyodagumi Asia-Pacific Co.,Ltd.
Established Chiyodagumi Taiwan Co.,Ltd.

2017 Yamanaka Co., Ltd. became a group company by transferring business.

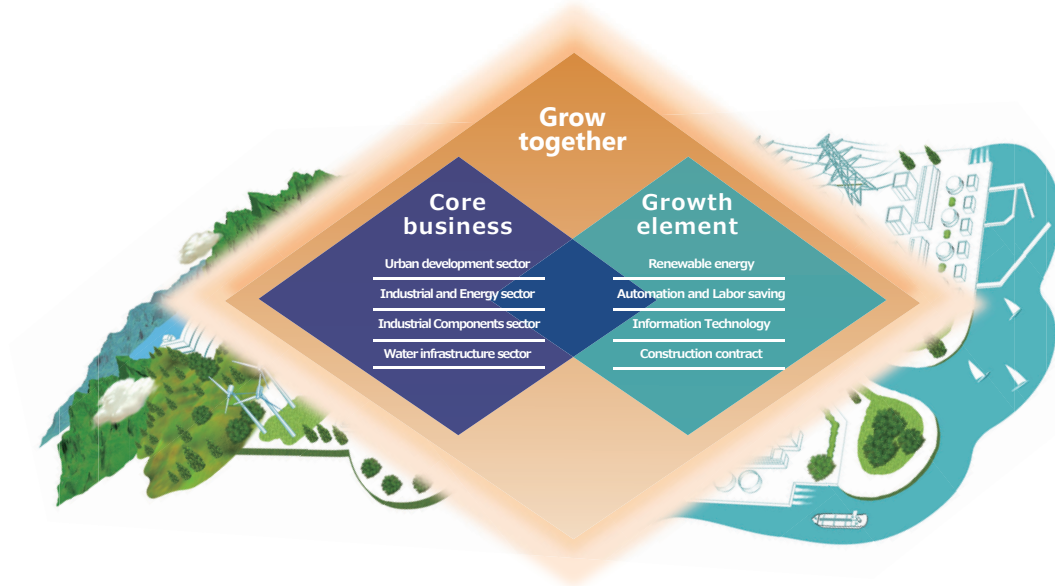
2019 Celebrated 110th anniversary.
Developed the brand tagline "Connect, Construct, Co-create"
and revamped the design and color of the company logo.

Chiyoda Reinetsu System Co., Ltd. became a group company by transferring business.
Midas Co., Ltd. became a group company through a capital tie-up.

2020 Established Japan grid Gear Corporation.



Business



We provide solutions for issues in a variety of locations and business fields. Our aim is to create a prosperous society through close connections.

Urban development sector

We view buildings and facilities as part of urban development and meet diverse needs in matters such as power supply equipment and transport equipment. Our services also cover the “rolling stock”, “electric power”, and “information” fields that support railroad infrastructure, as well as automated ticket gates and station equipment that help improve convenience for passengers using stations, thereby contributing to the wide-rang business activity developed by railway companies.



Industrial and Energy sector

We provide a wide range of products essential to the stable operation of production and manufacturing facilities. By offering comprehensive solutions for the electrical, mechanical, power, instrumentation, and logistics systems that are indispensable to factory operations, we contribute to both industry and society. In order to ensure a stable supply of electricity to power our daily lives, we provide power generation and transmission equipment for former general electricity utility companies, as well as wind, small-scale hydroelectric, and solar power generation equipment for providers focusing on renewable energy. We are also engaged in our own power generation business.



Industrial components sector

We provide high-quality industrial components and products through both route sales and direct sales. The wide range of components we handle are essential for Japan's world-class industrial and consumer machinery and equipment.



Water infrastructure sector

We support society's infrastructure through public works projects such as water and sewer systems, stormwater drainage systems, agricultural irrigation and drainage facilities, and water treatment facilities—all of which form the foundation of people's daily lives.



Renewable energy

Automation and Labor-Saving

Information Technology

Construction contract

Corporate Profile

Company name	CHIYODAGUMI CORPORATION
Founded	January 1909
Established	July 1918
Headquarters	1-2-9, Nishi-Shimbashi, Minato-ku, Tokyo 105-0003, Japan TEL: +81-3-3503-8111 (main line)
Representative	Tetsuya Shibayama, Representative Director & President
Capital	JPY 200,000,000 (Authorized capital: JPY 800,000,000)
No. of employees	451(as of April 2026)
Majorshareholders	Chiyoda Employee Shareholding Association, TOSHIBA CORPORATION, Asahi Mutual Life Insurance Company, IHI Corporation, Meiji Yasuda Life Insurance Company, No.of shareholders:315
Transacting banks	Sumitomo Mitsui Banking Corporation(Primary financial institution) Sumitomo Mitsui Trust Bank
License	<p>[Construction license] License no.: Special Construction License No. 5731 issued by the Minister of Land, Infrastructure andTransport Issued on November 1, 2025</p> <p>Types of construction Construction engineering / Scaffolding, Earthwork /Roofing / Electrical/Plumbing Tile, Brick and Block /Steel Structure/Glazing/Painting/Waterproofing/Interior Finishing Machine and Equipment Installation/Telecommunication/Fittings/Water and Sewerage</p> <p>License no.: Special Construction License No. 5731 issued by the Minister of Land, Infrastructure andTransport Issued on March 11, 2026</p> <p>Types of construction Civil Engineering</p> <p>[Secondhand goods dealers licence] Tokyo Metropolitan Public Safety Commission permission No. 301088401758</p>
Access	1-2-9, Nishi-Shimbashi, Minato-ku, Tokyo 105-0003, Japan A1-minute walk from Exit A8 or A4 of Uchisaiwaicho Station on the Toei Mita Line. JR, Tokyo Metro Ginza, Toei Asakusa, and Yurikamome lines A5-minute walk from the Hibiya Exit of Shimbashi Station. Tokyo Metro Marunouchi, Hibiya, and Chiyoda lines, A5-minute walk from Exit C3 of Kasumigaseki Station. A5-minute walk from Exit 9 of Toranomon Station on the Tokyo Metro Ginza Line.



Global Network

◆ Headquarters

1-2-9, Nishi-Shimbashi, Minato-ku, Tokyo 105-0003, Japan
TEL:+81-3-3503-8111 FAX:+81-3-3503-8129

◆ East Kanto Sales Office

1-26-1, Nobuto, Chuo-ku, Chiba-shi, Chiba 260-0032, Japan
TEL:+81-43-375-5377 FAX:+81-43-204-5221

◆ Kanagawa Sales Office

6-38-1, Sagamigaoka, Zama-shi, Kanagawa 252-0001, Japan
TEL:+81-46-206-5225 FAX:+81-46-280-4382

◆ Niigata Sales Office

1-2-25, Higashiodori, Chuo-ku, Niigata-shi, Niigata 950-0087, Japan
TEL:+81-25-245-5378 FAX:+81-25-241-4657

◆ Hokkaido Branch

4-1-1, Kita-Sanjo-Nishi, Chuo-ku, Sapporo-shi, Hokkaido 060-0003, Japan
TEL:+81-11-281-6228 FAX:+81-11-281-6229

◆ Tomakomai Sales Office

2-1-14, Omotemachi, Tomakomai-shi, Hokkaido 053-0022, Japan
TEL:+81-144-32-6581 FAX:+81-144-32-6582

◆ Tohoku Branch

4-6-1, Ichibancho, Aoba-ku, Sendai-shi, Miyagi 980-0811, Japan
TEL:+81-22-262-5211 FAX:+81-22-263-6507

◆ Hokuriku Branch

1-12, Kamitsutsumicho, Kanazawa-shi, Ishikawa 920-0869, Japan
TEL:+81-76-261-4136 FAX:+81-76-262-0898

◆ Toyama Sales Office

6-11, Sakurabashidori, Toyama-shi, Toyama 930-0004, Japan
TEL:+81-76-441-3011 FAX:+81-76-441-3016

◆ Fukui Sales Office

3-1-1, Ote, Fukui-shi, Fukui 910-0005, Japan
TEL:+81-776-22-4820 FAX:+81-776-22-4968

◆ Chubu Branch

1-13-26, Nishiki, Naka-ku, Nagoya-shi, Aichi 460-0003, Japan
TEL:+81-52-231-8381 FAX:+81-52-231-8440

◆ Kansai Branch

4-1-1, Imabashi, Chuo-ku, Osaka-shi, Osaka 541-0042, Japan
TEL:+81-6-7173-2891 FAX:+81-6-6209-8480

◆ Chugoku Branch

2-27, Tatemachi, Naka-ku, Hiroshima-shi, Hiroshima 730-0032, Japan
TEL:+81-82-247-4387 FAX:+81-82-249-7356

◆ Fukuyama Sales Office

2-27, Momijicho, Fukuyama-shi, Hiroshima 720-0811, Japan
TEL:+81-84-921-0431 FAX:+81-84-921-0433

◆ Tokuyama Sales Office

1-3, Honmachi, Shunan-shi, Yamaguchi 745-0036, Japan
TEL:+81-834-21-4365 FAX:+81-834-31-6827

◆ Ube Sales Office

1-7-23, Chuocho, Ube-shi, Yamaguchi 755-0045, Japan
TEL:+81-836-31-7100 FAX:+81-836-31-7102

◆ Shikoku Branch

2-1-1, Kotobukicho, Takamatsu-shi, Kagawa 760-0023, Japan
TEL:+81-87-851-0577 FAX:+81-87-822-2651

◆ Ehime Sales Office

3-16-17, Mishimamiyagawa, Shikokuchuo-shi, Ehime 799-0404, Japan
TEL:+81-896-24-1888 FAX:+81-896-24-3159

◆ Kyushu Branch

7-21, Hakataekichuogai, Hakata-ku, Fukuoka-shi, Fukuoka 812-0012, Japan
TEL:+81-92-441-0471 FAX:+81-92-441-0476

◆ East Kyushu Sales Office

1-2-19, Miyakomachi, Oita-shi, Oita 870-0034, Japan
TEL:+81-97-538-0346 FAX:+81-97-538-0712

◆ Miyazaki Sales Office

2-3-7, Kitamachi, Nobeoka-shi, Miyazaki 882-0814, Japan
TEL:+81-982-23-1023 FAX:+81-982-23-1026

Related companies in Japan

◆ Manjyu Corporation

1-2-9, Nishi-Shimbashi, Minato-ku, Tokyo 105-0003, Japan
TEL:+81-3-6670-1116 FAX:+81-3-6670-1117

◆ Chiyoda Kiden Co.

4-65-12, Shimbohon, Kanazawa-shi, Ishikawa 921-8062, Japan
TEL:+81-76-269-3501 FAX:+81-76-269-3541

◆ Yamanaka Ltd.

3-13-4, Kamezawa, Sumida-ku, Tokyo 130-0014, Japan
TEL:+81-3-3621-3111 FAX:+81-3-3621-3103

◆ Chiyoda Reinetsu System Co., Ltd.

6-38-1, Sagamigaoka, Zama-shi, Kanagawa 252-0001, Japan
TEL:+81-46-280-4381 FAX:+81-46-280-4382

◆ Midas Co., Ltd.

4704-3-1, Higashi-akasuna, Shimosuwa-machi, Suwa-gun, Nagano
393-0046, Japan TEL:+81-266-27-7573

◆ Japan Grid Gear Corporation

3-1-17, Tsurumachi, Taisho-ku, Osaka-shi, Osaka 551-0023, Japan
TEL:+81-6-7175-9140

Related companies outside Japan

◆ East Asia

China Chiyoda Trading (Shanghai) Ltd.

Taiwan Chiyodagumi Taiwan Co., Ltd.

South Korea Chiyoda Korea Co., Ltd.

◆ Southeast Asia

Thailand Chiyoda Energy Solution Co., Ltd.

◆ Latin America

Mexico CHIYODAGUMI DE MEXICO S.A.DE C.V.

Main suppliers

Atlas Copco KK
AMANO Corporation
ANEST IWATA Corporation
ANLET CO., LTD.
AOKI SEIMITSU KOGYO CO., LTD.
APEX DYNAMICS INC.,JAPAN
ASAHI KASEI CONSTRUCTION MATERIALS CORPORATION
Carrier Japan Corporation
Cottrell Engineering Co., Ltd.
Daido Steel Co., Ltd.
DAIHATSU DIESEL MFG.CO.,LTD
DAIHEN Corporation
Daiwa Can Company
DISCO Inc.
DMW CORPORATION
Doog Inc.
DOS Co., Ltd.
Dynabook Inc.
EBARA CORPORATION
Eriez Magnetics Japan Co., Ltd.
Fenwal Controls of Japan,Ltd.
Frontier Engineering Co., Ltd
Fujikura Ltd.
FullDepth Co., Ltd.
GS Yuasa Fieldings Co.,Ltd.
HERO LIFE COMPANY CO., LTD.
HORKOS CORP
IHI Corporation
ISHII IRON WORKS CO., LTD.
JAPAN STEEL TOWER CO.,LTD
Jitera Inc.
Johnson Controls, K.K.
KAJI TECHNOLOGY CORPORATION
KAMATATECNAS CO.,LTD
Kawasaki Heavy Industries, Ltd.
KITASHIBA ELECTRIC CO., LTD.
KITO CORPORATION
Komatsu Ltd.
KUKEN KOGYO CO.,LTD.
Kurita Water Industries Ltd.
MARUBENI INFORMATION SYSTEMS CO., LTD.
MEISEI ELECTRIC CO., LTD.
METAWATER Co., Ltd.
NAIGAI RUBBER INDUSTRY CO., LTD.
Nakamura Electric MFG.Co.,Ltd.
NAKAMURA KOKI CO.,LTD.
NGK Corporation

NIDEC ADVANCED MOTOR CORPORATION
NIDEC TECHNO MOTOR CORPORATION
NIKKISO CO., LTD.
Nippon Dry-Chemical CO., LTD.
NIPPON GEAR Co., Ltd.
NIPPON THERMOENER CO., LTD.
NISHISHIBA ELECTRIC CO., LTD.
NISSO INDUSTRIES CO., LTD.
NITTO BOSEKI CO., LTD.
NOHMI BOSAI LTD.
Nomura Micro Science Co., Ltd.
NORITAKE CO., LTD
Okura Yusoki Co., Ltd.
OTSUKA CORPORATION
Primetals Technologies Japan, LTD
Sanken Electric Co., Ltd.
SANKI Co., LTD.
SANKI ENGINEERING CO., LTD.
Saxin Corporation.
SEIWA ELECTRIC MFG.CO.,LTD.
Shanghai Ghrepower Green Energy Co.,Ltd.
SHIBAURA MACHINE CO., LTD.
SHIBAURA MECHATRONICS CORPORATION
Shin Nippon Machinery Co., Ltd
SHINDEN TRADING CO.,LTD.
SINTOKOGIO, LTD.
SoftBank Corp.
SOLID Co.,Ltd.
SPM Instrument Japan
Sumitomo Heavy Industries Gearbox Co., Ltd.
Swatbrains Corporation
Tadano Infrastructure Solutions Ltd.
TAKAOKA TOKO CO., LTD.
TANABE PNEUMATIC MACHINERY CO., LTD.
TERAL INC.
TMEIC Corporation
TOEI ELECTRIC CO., LTD.
TOSHIBA CORPORATION
Toukei Computer Co., Ltd.
TOYO SHAFT CO.,LTD.
TSUBAKIMOTO CHAIN CO.
TSUKISHIMA KIKAI CO., LTD.
TVE Co.,Ltd.
UCHIDA ESCO Co.,Ltd.
WorkVision Corporation

(In alphabetical order)

CYD_CP_2604_E